

[ALL](#)
[TECHNOPOLYMER FINISHES](#)
[FINISHES](#)
[TABLE TOP FINISHES](#)
[FABRICS](#)
[FABRICS FOR CUSHIONS](#)
[MAINTENANCE](#)

## FABRICS

### V3X VELVET – STANDARD

FIRE RETARDANT



V3 57



V3 58



V3 59

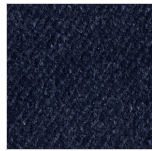
### V3Y VELVET – ALTERNATIVE OPTIONS



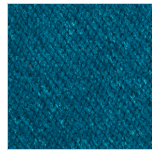
V3 60



V3 62



V3 63



V3 64



V3 66

I 11M - UNI 9175    I Classe 1 - UNI 9177    EN EN 1021:14 Part.1/2    GB BS 5852:06 crib 5    F NF - P 92 503 - M1    D DIN 4102 - B1    USA California TB 117:2013  
 EN IMO MED - Ftp 307 Part.8

### V4X VELVET – STANDARD

WATER REPELLENT



V4 38



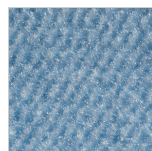
V4 39



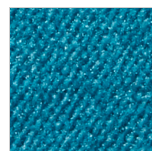
V4 40



V4 44



V4 47

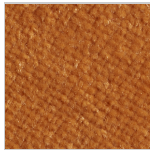


V4 50

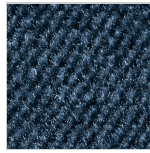
### V4Y VELVET – ALTERNATIVE OPTIONS



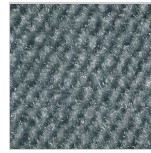
**V4 45**



**V4 46**

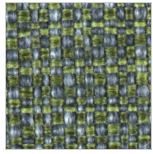


**V4 48**



**V4 49**

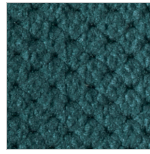
**TX FABRIC – STANDARD**



**T5 26**



**T5 27**



**M2 09**  
water repellent



**T3 25**  
fire retardant

I Classe 1    USA Calif. Bull. 117 June 2013    GB BS 5852 Crib N.5 using a CM Foam 35 Kg/cu.m.    EN EN 1021 Part. 1-2 using a CM Foam 35 Kg/cu.m. Oeko-Tex Standard 100



**T6 28**  
fire retardant

UNI 9175 (CL 1.IM)    UNI 8456 (CL 1)    UNI EN 1021 1-2    BS5852 1-2

**TY FABRIC – ALTERNATIVE OPTIONS (for Lady B Pop: recommended fabric)**

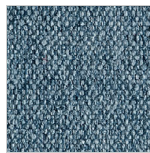
**WATER REPEL**



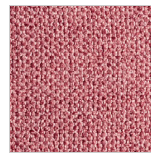
**T9 78**



**T9 79**



**T9 80**



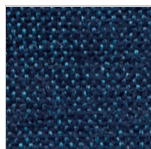
**T9 85**

**T7X FABRIC – STANDARD**

**FIRE RETARDI**



**T7 29**



**T7 30**

I Classe 1. IM (UNI 9175) GB BS-5852-1 (Section 4, sources 0+1)

**EPX SIMIL-LEATHER – STANDARD**

**FIRE RETARDANT**



**EP 70**



**EP 73**

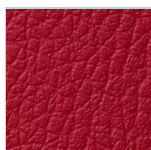


**EP 75**

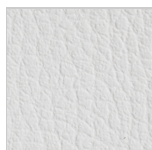
**EPY SIMIL-LEATHER – ALTERNATIVE OPTIONS**



**EP 71**



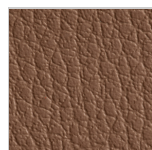
**EP 72**



**EP 74**



**EP 67**



**EP 68**



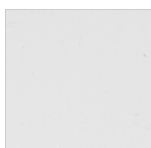
**EP 69**

I Classe 1. IM (UNI 9175) EN 1021/1 EN 1021/2

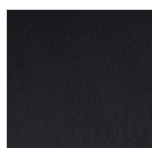
**CNY NATURAL LEATHER – ALTERNATIVE OPTIONS**



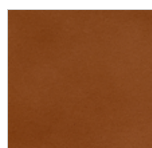
**CN 82**



**CN 83**



**CN 84**



**CN A1**



**CN A2**

**WFY WOOL – ALTERNATIVE OPTIONS**

**FIRE RETARDANT**



**WF 95**



**WF 96**



**WF 97**



**WF 98**

I Classe 1 IM con schiuma standard ignifuga con densità 25 Kg/cu.m. EN EN 1021 Part. 1-2 using a standard foam 20/22 Kg/cu.m.

---

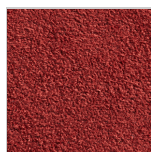
**MX FABRIC – STANDARD**



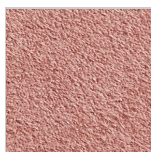
**M1 05**

---

**MY FABRIC – ALTERNATIVE OPTIONS**



**M1 16**



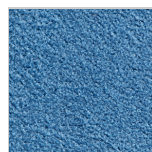
**M1 17**



**M1 18**



**M1 19**



**M1 20**

USA Cal. Tech. Bulletin 117, Section E, Part. 1 (CALIFORNIA TEST)

---

**T4X FABRIC – STANDARD**

**FIRE RETARDANT**



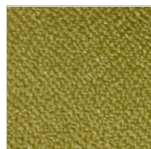
**T4 51**



**T4 55**

---

**T4Y FABRIC – ALTERNATIVE OPTIONS**



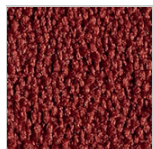
**T4 53**



**T4 A3**



**T4 A4**



**T4 A5**



**T4 56**

I Classe 1    D B1 DIN 4102    F M1    GB BS 5852 Crib 5 using a CM Foam 35 Kg/cu.m.    A Q1 (OENORM 3800 Part 1)    A B1 (OENORM B3825)  
 EN EN 1021 Part. 1-2 using a CM Foam 35 Kg/cu.m.    EN EN 13773 Burning Behaviour: class 1    EN EN 13501 - 1esp. 1,2 : B-s1, d0    USA Calif. Bull. 117 June 2013    EN EN ISO 6940/6941  
 CH Fire Protection Classification: 5.3

**AY FABRIC – ALTERNATIVE OPTIONS**

**STAIN RESIS**



**T8 06**



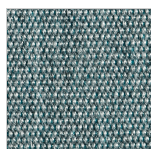
**T8 07**



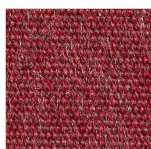
**T8 08**

**WPX ACRYLIC – STANDARD**

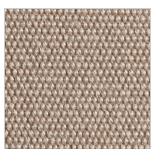
**WATERPI**



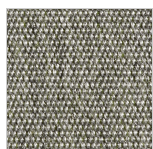
**WP86**



**WP87**



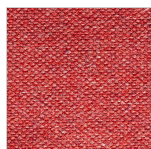
**WP88**



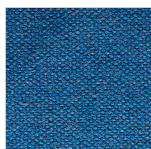
**WP89**

**KY FABRIC – ALTERNATIVE OPTIONS**

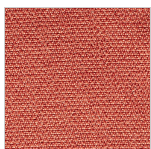
**FIRE RETARI**



**K1 90**

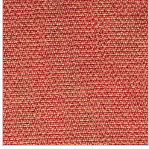


**K1 99**



**K1 00**

I UNI 9175 Classe 1 IM    EN 1021 - 1 (cigarette)    EN 1021 - 2 (match)    GB BS 7176 Low Hazard    GB BS 5852 Ignition Source 5    GB BS 7176 Medium Hazard    F NF D 60 - 013  
 A ÖNORM B 3825 & A 3800-1 (58kg/m3 CMHR Foam)    GB BS 5867 - 2:Type B Curtains & Drapes

**K2 04**

EN 1021 - 1 (cigarette)   EN 1021 - 2 (match)   GB BS 7176 Low Hazard   EN 13501 - 1 Adhered Class B, s1, d0   EN 13501 - 1 Un-adhered Class C s1, d0

---

I materiali riprodotti sono puramente indicativi per le inevitabili differenze dovute alla riproduzione tipografica e/o la visualizzazione a monitor.  
SCAB si riserva il diritto di modificare, senza preavviso, la propria produzione. Misure e colori sono puramente indicativi.

---

SUBSCRIBE TO NEWSLETTER

Follow us:     

[Privacy Policy](#) - [Cookie Policy](#) - [Reservati](#)

Copyright 2019 © Scab Giardino S.p.a. / P.IVA IT 00638670984