

MEDIA conference walls and high table



FEATURES

- Easy and fast assembling - "metal to metal" fixing
- Different types of media units to fit your needs
- Integration possibility for a flat screen (TV or computer) along with media and data technologies

TECHNICAL INFORMATION



Media wall with VESA mount and cut-out for power socket CMZ123*



Media wall with VESA mount and round Ø60 mm plastic cable port CMZ121*



Media wall with VESA mount and cut-out for power socket CMZ124**



Media wall with VESA mount and fixed high table (with cut-out for power socket) CMM190

*** Not free standing – must be fixed to the table. Suitable meeting tables listed below.**

- NOVA (BNA180, BNA200);
- NOVA WOOD (CNM121, CNM16A, CNM181, CNM24A, CNM240, CNM281, CNM123, CNM16C, CNM183, CNM242, CNM283, CNM122, CNM16E, CNM182, CNM24B, CNM241, CNM282, CNM127, CNM16G, CNM187, CNM246, CNM287, CNM124, CNM16K, CNM184, CNM24C, CNM243, CNM284, CNM126, CNM16M, CNM186, CNM245, CNM286, CNM125, CNM16P, CNM185, CNM24D, CNM244, CNM285, CNM128, CNM16S, CNM188, CNM247, CNM288);
- T-EASY (DZM202, DZM242).

**** Not free standing – must be fixed to the table. Suitable high tables listed below.**

- NOVA (CNM165, CNM180);
- NOVA WOOD (CNM12A, CNM146, CNM166, CNM18A, CNM129, CNM147, CNM167, CNM189).

Carcass

- Front and back panels made of 16 mm MFC (melamine);
- Sides made of 18 mm MFC (melamine);
- All edges of front and back panels are made of 1 mm ABS;
- Non-visible edges are 0,5 mm ABS;
- Back panel fixing to carcass with rectangular 25 mm pieces of MDF;
- Four height levelling feet (+10 mm);
- Metal brackets for connection to table tops are made of 2,5 mm sheet metal (except media wall with high table);
- Round white plastic cable ports, Ø60 mm.

VESA mount

- VESA standards – 100x100, 200x100, 200x200, 300x300 mm;
- VESA plate made of 3 mm metal sheet (325x325 mm);
- VESA plate has an option for screen height adjustment \pm 50 mm;
- Screen and carcass have 40 mm space for plugs and wiring;
- Screen spacers made of 40x20x2 mm tube;
- Powder coated metal;
- Recommended screen up to 42", weight up to 15 kg;
- Screws for screen fixing to VESA plate are NOT INCLUDED.

Fixed high table

- Desktop with \varnothing 80 mm cut-out for power socket;
- 25 mm MFC (melamine) with 2 mm ABS edging;
- Plastic feet with height levelling (+10 mm);
- \varnothing 35x2 mm powder coated metal frame with \varnothing 86x4 mm side fixing plates.

Power socket (G6F0360)

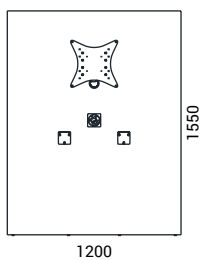
- 1 AC power socket 100 – 230 V;
- Integrated USB fast charger (USB Type A+C, max 5,6A);
- 1 cable guide for multimedia cable;
- Mounting in \varnothing 80 mm cut-out;
- Dimensions: \varnothing 90x66 mm;
- Power socket standards: EU, FR, UK, CH;
- Cable length: 3,8 m.

Power socket (G6F0402)

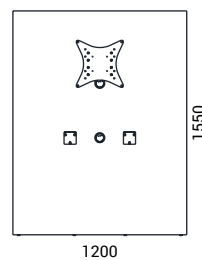
- 1 AC power socket 100 – 230 V;
- Dimensions: 90x66 mm;
- Mounting in \varnothing 80 mm cut-out;
- Power socket standards: EU, FR, UK, CH;
- Cable length: 3,8 m.

RANGE

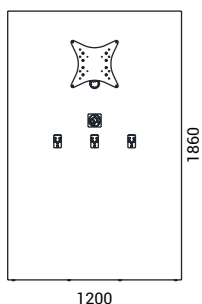
Media wall with VESA mount and cut-out for power socket CMZ123



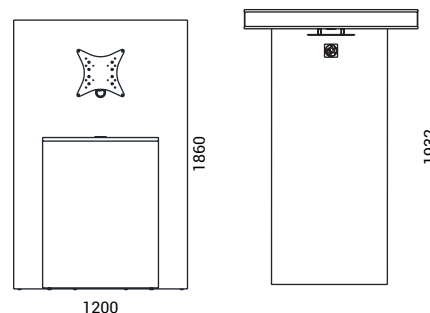
Media wall with VESA mount and round \varnothing 60 mm plastic cable port CMZ121



Media wall with VESA mount and cut-out for power socket CMZ124

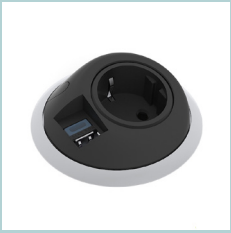


Media wall with VESA mount and fixed high table (with cut-out for power socket) CMM190



132 mm - depth of Media wall

Must be ordered



Power socket
G6F0360



Power socket
G6F0402