

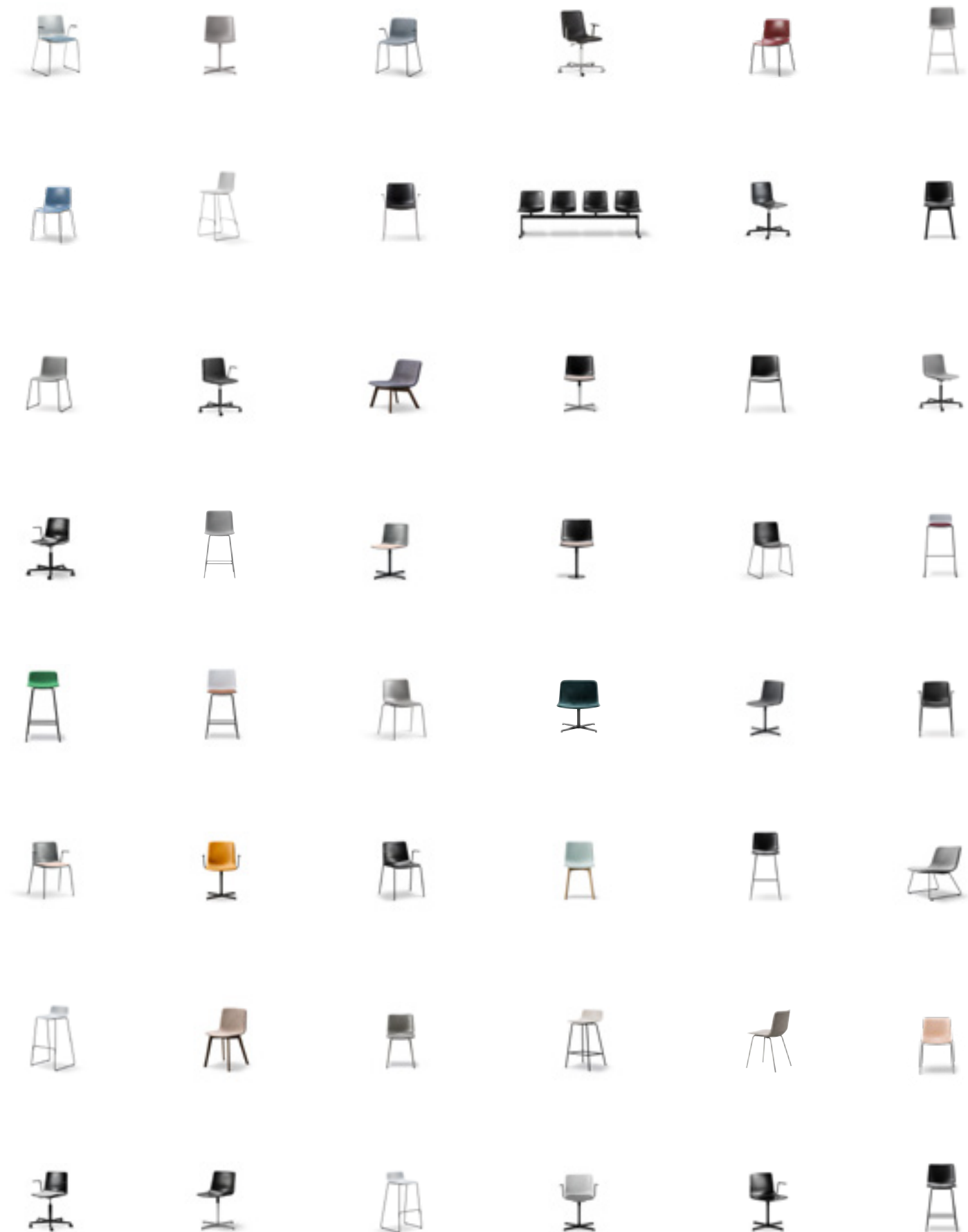
The Pato Collection

A photograph of three modern chairs from the Pato Collection. The chairs have a simple, angular design with thin black metal legs. The top chair is dark blue, the bottom-left chair is olive green, and the bottom-right chair is dark teal. They are arranged on a light-colored floor against a plain background.

Fredericia

Content

A modern original	3
A history of originality	4
Designers Welling/Ludvik	6
Craftsmanship & Cutting-edge technology	8
Environmental profile	12
Pato Recycle	14
Collaboration & Creativity	18
Entrepreneurs & Executives	30
Let's do lunch	36
Have a seat	46
Make yourself comfortable	52
At home anywhere	64
Outdoor	72
The Pato colour palette	76
Features	86
The Pato Collection	88
Contact	126



A modern original

The Pato Collection is the ideal choice for spaces designed for lounging, dining, working and living.

With Pato, Fredericia's legacy of detailing and craftsmanship meets today's industrial standard. Pato's polypropylene shell marks a new peak in quality and execution of the durable and 100% recyclable material.

The crafted quality of the initial Pato chair has allowed the series to expand into a full-scale furniture collection available in a wide variety. From large-scale interiors with mixed applications to streamlined auditoriums or even as stand-alone pieces in an eclectic interior design.

Engaging in close collaboration with local suppliers Fredericia has complete control and supervision over all stages of the production.



A history of originality

Ever since we first opened our doors in 1911, our ambition has been to create simple, functional furniture with a focus on craftsmanship. Discrete details, and only the finest, long-lasting materials. Authentic designs rooted in our Nordic heritage expressed in an honest, enduring aesthetic.

From our humble beginnings as Fredericia Stolefabrik – meaning “chair factory” – we have continued to build on our furniture expertise and reputation for impeccable craftsmanship. Highlights from our history include our collaboration with Borge Mogensen who redefined our brand in 1955. A move by Fredericia owner Andreas Graversen to infuse Fredericia’s heritage of high quality with innovation and Mogensen’s honest and unpretentious approach, balanced by a refined sense of functionality, was avant-garde at the time. He was one of the first to promote an ethical approach to design, where he sought to connect long-lasting quality, rational production, natural materials, and human empathy. An uncompromising approach he embodied in his own work.

While at the same time, he insisted on an artistic expression that became his trademark. The next generation of Graversen, Thomas son of Andreas, ushered in a new era with the collaboration

with Nanna Ditzel as Head of Design in 1989. One of the most prominent figures of Danish design, Ditzel challenged the status quo with daring original thinking. Adding her artistic angle and signature sophistication to an array of award-winning pieces during her tenure at Fredericia developing the collections until 2005.

To address the growing popularity of our designs and our strategy for international expansion under the direction of Thomas Graversen and CEO Kaja Møller, we’ve extended our circle of designers to include international names worth knowing. Such as Jasper Morrison, Shin Azumi, Space Copenhagen, Cecilie Manz, Hugo Passos, Welling/Ludvik and more. Along with our continued collaborations with the heirs of original masters, such as Børge Mogensen, Hans J. Wegner, Jens Risom and Nanna Ditzel.

DESIGNER

Welling/Ludvik

Hee Welling and Gudmundur Ludvik are the design team behind the Pato Collection, which was launched in 2013 and has since been expanded with a wide range of variants that accommodate many different needs from residential to corporate to hospitality and more. Q&A with Welling/Ludvik about the Pato Collection.



1. What is your design philosophy?

Keep it simple – that is our mantra. We always aim to optimise our design to its clearest, most useful, production friendly and simple shape. By dismissing all unnecessary items and details, we find the true essence of the design, which we believe creates the best, most honest and long-lasting product.

2. What makes your designs special?

The goal for each piece of furniture is for, it to be simple, comfortable and functional with well-balanced proportions. Our designs are based on pure functionality and aesthetics and are a result of thorough research and testing to find the best solution for any given situation.

3. How do you ensure a connection between Fredericia's design DNA and your own?

We share a close affinity with Fredericia's design principles of beauty, simplicity and expert craftsmanship, so our product designs are all about being true to our own values.

4. What was the inspiration behind Pato?

We are inspired by many things - new materials, productions techniques, sustainability and the world around us - what works, what doesn't work and what can be made better. With Pato, we wanted to create the optimal chair, suitable for every situation - anywhere. A chair with a simple expression, but with the best possible comfort, produced by using the best materials, the most efficient production techniques, together with the best Scandinavian sub-suppliers.

5. How long was the process from your first idea to the final product?

The first version of the Pato chair took around three years to develop, from the first idea until the product launch. Due to the success of the first chair, Pato has turned into a larger series of furniture, so it has been an on-going process since 2010, and the family is still growing.

6. Which characteristics of your design are you especially fond of?

The edge around the Pato shell provides the chair's character, and it's an important detail as it provides comfort and prevents the edge "cutting" into the knees and back when sitting. Besides that, it visually adds precision and sharpness to the expression of the chair. We also feel that it could not have been done differently, because the aesthetics, functionality, craftsmanship, environmental issue and price goes hand in hand, and that makes us very proud of the Pato chair.

7. Which detail was the greatest challenge to materialise in the actual product?

The most significant challenge with the Pato family has been to preserve the potential for the family to grow and become sustainable both regarding aesthetics as well as the durability. Times are changing with new trends popping up all the time, and the environment is suffering because of this 'disposable' culture. This type of furniture, on the other hand, is considered from all

angles and sustainability has been an essential factor in our work with the Pato chair. Another challenge was the version featuring the built-in writing desk and the importance of integrating it as a part of the series. A chair with a writing desk frequently creates problems when stacking, but it was an important issue for us, so we continued developing the product until we proudly could present the stackable solution.

Craftsmanship & cutting-edge technology

Traditional and innovative disciplines converge in the design and manufacturing of Pato. At Fredericia, outstanding craftsmanship and cutting-edge technology both play a role in the expression, tactility and longevity of each of our products.

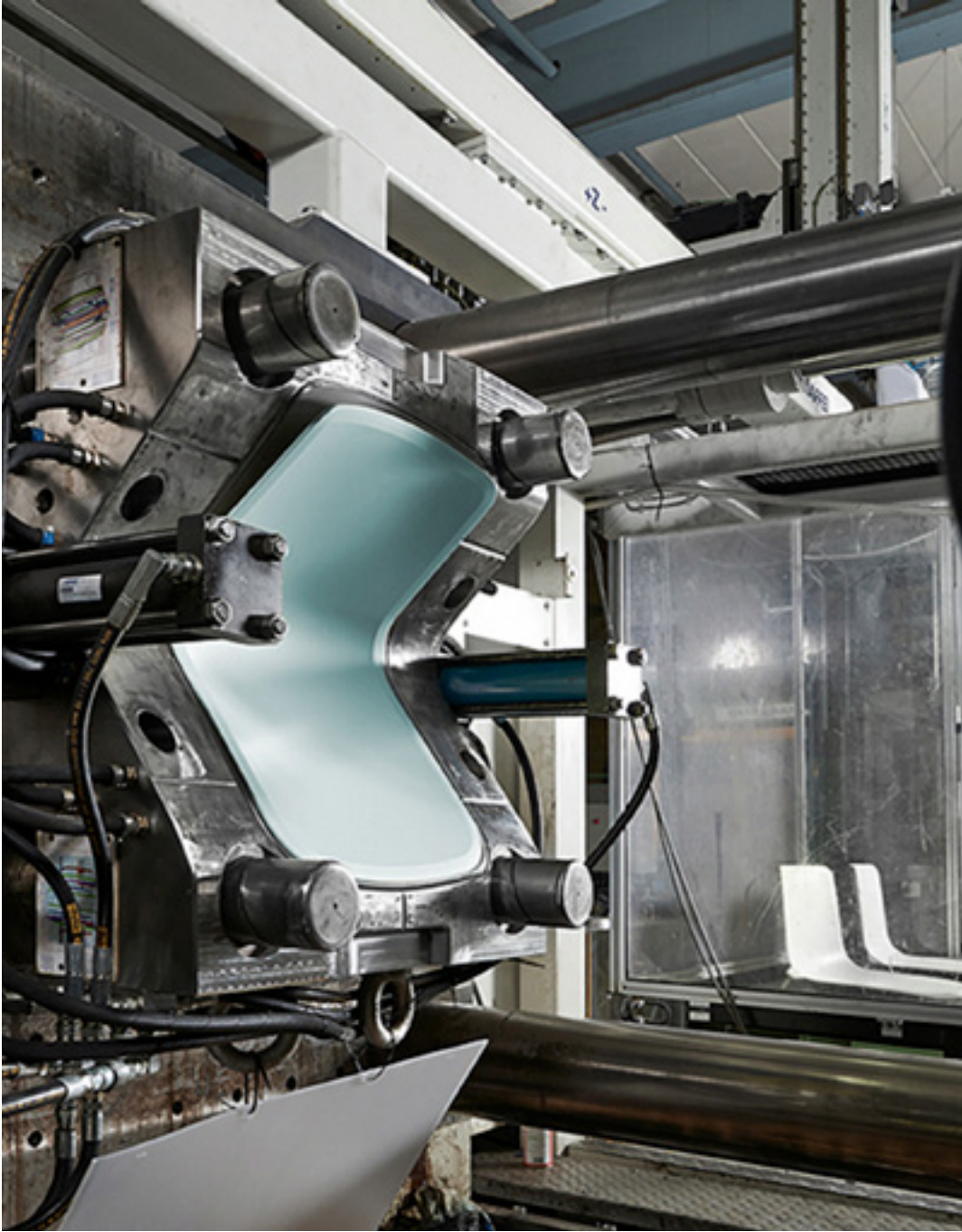
Drawing on our heritage of working with wood, we have a highly skilled team with expertise in carpentry and upholstery, driven by their passion for materials and a keen eye for detail.

To meet the needs of international marketplace with different requirements for the private, commercial, and hospitality sector, we have incorporated technology that allows us to apply our carpentry techniques to an array of materials in addition to wood. The Pato with its original polypropylene shell is a shining example of this fusion of technology and tradition. Three years of research and development went into the Pato. The result is crafted details,

such as the bevelled edge and just the right amount of flexibility in the back. Not to mention, a surface finish unseen in any other such polypropylene product. All plastic surfaces have a durable, silky smooth look and feel that doesn't show signs of being machine-made.

With Pato, Fredericia has succeeded in applying its high standards of texture and finish with wooden products to products aimed at a mass market. A versatile chair with an authentic appeal designed to stand the test of time.







Environmental profile

Environmental friendly material

When used rightly, Polypropylene (PP), due to its recyclability is a material with low environmental impact. Pure PP contains no toxic chemichals and is composed solely from carbon and hydrogen.

With Pato, the polypropylene shell accounts for an average of 55% of the total weight. The plastic granulate is 100% recycled.

Steel frames

The chair frame is made from quality steel and the surface is treated with eco-friendly, solvent-free powder coating or chrome-plated with Chrome3+. The chrome plating complies with lacquer coating standard ISO 1456.

Wood frames

Fredericia only uses European wood that comes from sustainable forestry involving responsible logging methods, and partnership with suppliers who must have a replanting policy. All Pato wood frames and shells are FSC certified and are fully tracable.

Textiles

The stadard textiles offered by Fredericia for Pato all carry the EU Ecolabel. We offer textiles that have passed fire testing in accordance with the British standard BS 5852, and the California Technical Bulletin 117 upholstery test.

Leather

Raw hides are sourced from Northeren Europe, where the animal welfare is monitored. Surplus leather that we cannot use in our own manufacturing, is sold on to a third party and used for other leather products to minimise waste. Fredericia uses vegetable tanning and Chrome III tanning methods, as well as water-based dyes in the colouring process.

All Frederica chrome tanned leathers are free of allergens and meet the high environmental standards of the German "Blue Angel" eco-label.



FSC LICENCE NUMBER
FSC® 151292



BLAUER ENGEL
THE GERMAN ECOLABEL

100% recycled
100% recyclable



The Pato series was introduced in 2013 and has since grown to become one of Fredericia's most comprehensive furniture collections. By integrating recycled polypropylene plastic (PP) into our existing portfolio of products, we are taking further steps to help protect the environment. While at the same time, ensuring the continuity of design.

Pato has always been made from recyclable PP, which is pure and free from any additives. By adding upcycled plastic waste while

keeping the design recyclable in the future, we follow our CSR strategy to minimise our environmental footprint and contribute to the circular economy.

By integrating recycled polypropylene plastic (PP) into our existing portfolio of products, we are taking further steps to help protect the environment. While at the same time, ensuring the continuity of design.

100% RECYCLED

Minimize waste

We minimize waste from the commercial and the industrial sectors by using upcycled plastic from two sources.



Post-industrial recycled PP
This is plastic waste from the production of other polypropylene products which has been collected and reprocessed for reuse, which makes a zero-waste production line.



Post-consumer recycled PP
This is used plastic from commercial products, which has been sorted and reclaimed. Typically from household waste such as yogurt container and medicine bottles or from other sources such as discarded fishing nets.



Ready for the future

The final material for Pato is a mix of the softer post-consumer PP and the more rigid and durable post-industrial PP. Making each chair both recyclable and durable in use.



100% RECYCLABLE



Ancient Green
100% Post-industrial recycled PP



Black
30% Post-consumer recycled PP
70% Post-industrial recycled PP



Dark Grey
100% Post-industrial recycled PP



Quartz Grey
100% Post-industrial recycled PP



Dark Blue
100% Post-industrial recycled PP



White
100% Post-industrial recycled PP



Stone
100% Post-industrial recycled PP



Storm
100% Post-industrial recycled PP



Powder Nude
100% Post-industrial recycled PP



Ocean
100% Post-industrial recycled PP



Sand
100% Post-industrial recycled PP



Dark Red
100% Post-industrial recycled PP

CIRCULAR BY DESIGN

Pato is an environmental friendly collection of multi-purpose chairs comprised of pure recycled polypropylene (PP). Consequently, every chair in the series can be recycled endlessly.



EXCHANGING IDEAS, INSPIRATION

Collaboration & creativity

Whatever the nature of a space, whether it's a private organisation, a cultural centre for learning or simply a place for exchanging creative ideas, it needs to be conducive to sharing. Collaborating. Learning from each other. The spaces we create and the furniture we fill them with have to be equally as open, flexible, and adaptive. All of which you will find intrinsic to the Pato design.





PATO 4 LEG ARMCHAIR. Model: 4212
Upholstery: Leather 95 cognac.
Base: Black painted steel.

LEFT
PATO OFFICE ARMCHAIR. Model: 4012
Upholstery: Capture 5501.
Base: Black painted steel.

PREVIOUS PAGE
PATO OFFICE. Model: 4032 Upholstery:
Leather 95 cognac.
Base: Black painted steel.





PATO 4 LEG. Model 4202
Upholstery: Leather 95 cognac.
Base: black painted steel.

PREVIOUS PAGE
PATO 4 LEG ARMCHAIR. Model: 4212
Upholstery: Leather 95 cognac.
Base: Black painted steel.



PATO OFFICE. Model 4022.
 Upholstery: Rime 641. Base: Black painted steel.
MESA TABLE. Model 4616.
 Tabletop: Linoleum black. Base: Black painted aluminum.

RIGHT
PATO OFFICE. Model 4022.
 Upholstery: Rime 641. Base: Black painted steel.
MESA TABLE. Model 4616.
 Tabletop: Linoleum black. Base: Black painted aluminum.
SPINE LOUNGE SUITE PETIT by Space Copenhagen.
 Model 1711. Upholstery: Savanna 242.



PATO SLEDGE. Model 4100
Shell: Polypropylene, Sand.
Base: Chrome



MIXING BUSINESS WITH PLEASURE

Entrepreneurs & executives

The more our office and private lives overlap, the greater the need for spaces that welcome both a serious and a playful approach to work. An atmosphere that honours the needs of a corporate executive, without appearing cold. As well as the restless mind of a creative entrepreneur, but with a sense of structure. Enter Pato. Almost like a chameleon, the simple, streamlined design easily signals corporate credibility, along with the free spirit of creative thinkers.





PATO SWIVEL: Model 4002. Upholstery: Leather 93 indian red. Base: Chrome.
MESA TABLE. Model 4330. Tabletop: Black linoleum. Base: Black painted aluminium.

WEGNER OX CHAIR & WEGNER OX OTTOMAN By Hans J. Wegner.
Upholstery: Leather elegance black. Base: Chromed steel.

PAL TABLE by Keiji Takeuchi. Model: 6755. Top: Walnut oiled. Base: Stainless steel.
MEADOW LAMP by Space Copenhagen. Model 8115
HYDRO VASE by Sofie Østerby. Model 8210

PREVIOUS PAGE
PATO SWIVEL. Model 4002. Upholstery: Leather 93 indian red. Base: Chrome



PATO EXECUTIVE OFFICE. Model 4072.
Upholstery: Leather 75 cognac. Base: Black painted steel.
MESA TABLE. Model 4630.
Tabletop: Linoleum black. Base: Black painted aluminum.

LEFT
PATO EXECUTIVE OFFICE. Model 4072.
Upholstery: Leather 98 black. Base: Chrome.
6286 TABLE by Børge Mogensen. Model 6286. Wood: Smoked oak
SØBORG STEEL BASE CHAIR by Børge Mogensen.
Model 3062. Upholstery: Leather 88 black. Base: Black painted steel.

INFORMAL GET TOGETHERS

Let's do lunch

Work canteens, cafeterias, large-scale public seating areas. While the scenarios and spaces are different, they share many of the same criteria for the type of furniture inside. A discrete design that can harmonise with its surroundings. Something calming to the eye, when seen in the context of a room and close-up as individual chairs around a table. Chairs that allow for conversation, crafted with comfort and convenience in mind. Like Pato.





PATO SLEDGE. Model 4100.
Shell: Polypropylene White, Powder Nude and Sand.
Base: White, Powder Nude and Sand painted steel.
MESA TABLE. Model 4618.
Tabletop: Nano laminate white. Base: White painted aluminium.

PREVIOUS PAGE
PATO SLEDGE. Model 4100.
Shell: Polypropylene Storm. Base: Chrome



PATO 4 LEG ARMCHAIR. Model 4210.
Shell: Polypropylene Black.
Base: Chrome.



PATO BENCH. Model 4340.
Base: Quartz grey painted steel.

RIGHT
PATO SLEDGE. Model 4100
Shell: Polypropylene Quartz Grey.
Base: Quartz Grey painted steel.





PATO SLEDGE. Model 4101
Shell: Polypropylene Quartz Grey
Seat upholster: Savanna 242
Base: Black painted steel

PATO STOOL. Model 4311
Shell: Quartz Grey
Seat upholster: Savanna 242
Base: Black painted steel

DINING & CONVERSING

Have a seat

What makes people come back to a restaurant or bar again and again? Aside from the menu and other offerings, it's because people feel comfortable there. They like the look, the feel, the vibe, and the furniture is a key reason why. From the tactile sensation of the material to the colour scheme, furniture reflects not only a brand identity – but also your own identity. Whether in a public venue or a private setting at home, Pato can enhance any dining situation with a comfort factor that allows people to enjoy their meals – and each other's company.





PATO 4 LEG ARMCHAIR. Model 4212.
Upholstery: Leather 76 olive.
Base: Black painted steel.

PREVIOUS PAGE
PATO 4 LEG CENTER. Model 4252.
Upholstery: Ruskin 33.
Frame: Quartz grey painted steel.





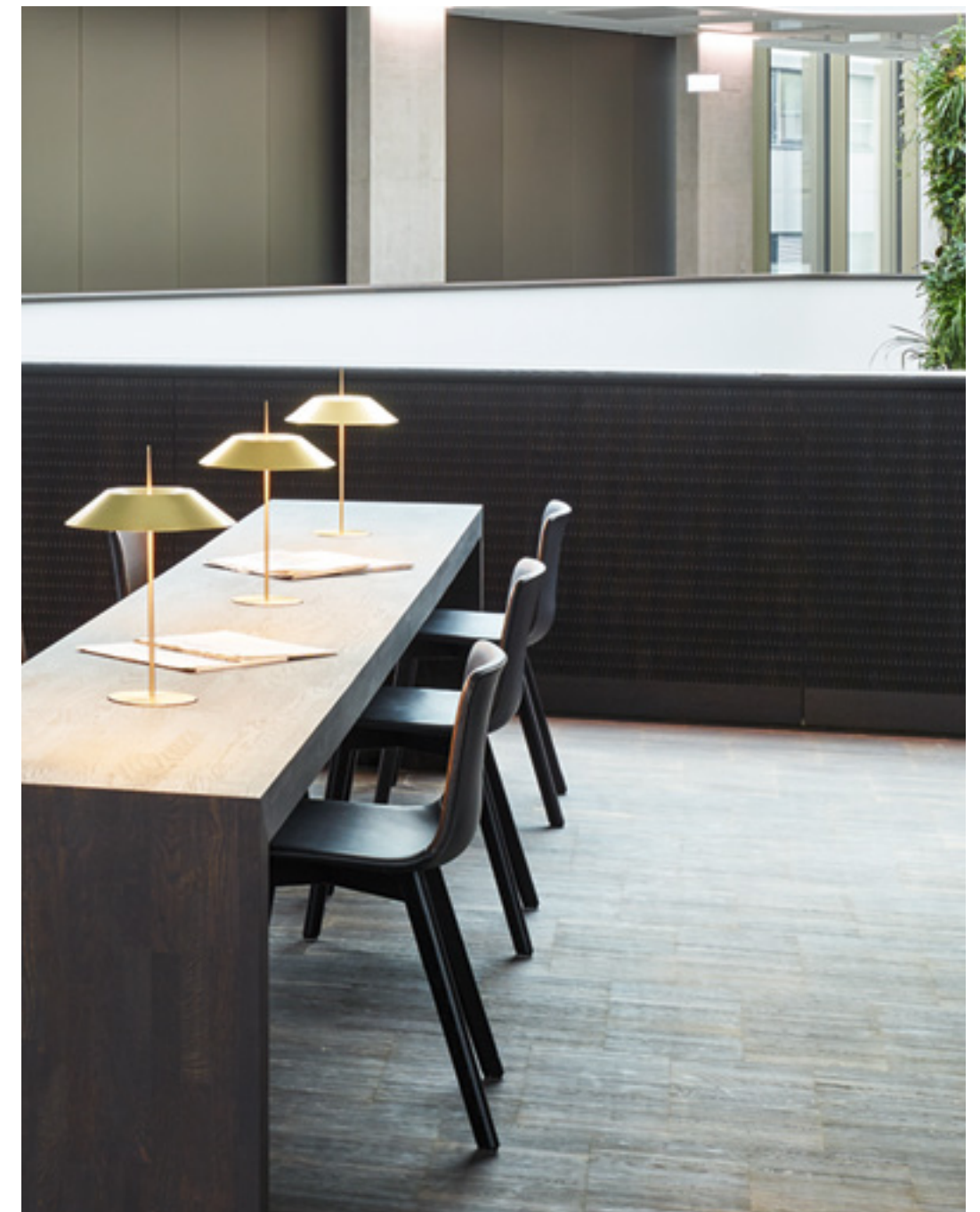
PATO SLEDGE BARSTOOL. Model 4302.
Upholstery: Leather 92 Tan.
Base: Black painted steel.

LOUNGING & RELAXING

Make yourself comfortable

In a hyper-connected world, finding time to relax is crucial. Lounge areas are becoming a must in modern spaces around the globe, found in airports, museums, corporate lobbies, hotels, waiting areas and even residential homes. Boasting padded upholstery on both seat and back, Pato Lounge chairs are like a pause button from your every day activities. With a light expression that doesn't impose itself on its surroundings. All of which makes the Pato Lounge appealing as an informal intermediate – between private and public, work and leisure, conversing and relaxing.





PATO WOOD BASE. Model 4222
Upholstery: Leather 377 dark brown
Base: Oak black lacquered

PREVIOUS PAGE
PATO LOUNGE. Model 4382
Upholstery: Leather 377 dark brown
Base: Chrome

PAL TABLE by Keiji Takeuchi. Model: 6755. Top: Black lacquered. Base: Stainless steel.
MEADOW. Model 8115.



PATO LOUNGE SLEDGE. Model 4372
Upholstery: Savanna 442
Base: Black painted steel.
NARA COAT STAND. Model 1880



PATO BARSTOOL. Model 4302.
Upholstery: Leather 92 Tan. Base: Chrome
MEADOW. Model 8115.
HYDRO. Model 8210.

LEFT:
PATO STOOL. Model 4312.
Upholstery: Leather 92 tan. Base: Chrome.
SWOON PETIT. Model 1776.
Upholstery: Grand Mohair 9103. Base: Chrome.
Upholstery: Sinequanon Bronzo 024. Base: Chrome.
TABLEAU COFFEE TABLE. Model 1690.
MEADOW. Model 8115.
HYDRO. Model 8210.
LOCUS. Model 8215



PATO STOOL. Model 4312.
Upholstery: Tempt 61168.
Base: Black painted steel.

LEFT
PATO BARSTOOL 4 LEG. Model 4307.
Upholstery: Leather 92 Tan.
Base: Chrome.
LYNDERUP CHAIR. Model 3080.
Shell: Black.
Base: Black painted steel.
HYDRO. Model 8210.



PATO LOUNGE 4 LEG. Model 4362.
Upholstery: Pilot 132.
Base: Stone painted steel.



RIGHT
PATO LOUNGE WOOD BASE. Model 4392.
Upholstery: Vidar 472.
Base: Smoked oak stained.
TABEAU. Model 1960.



PATO 4 LEG. Model 4202.
Upholstery: Leather 37 Grey.
Base: Quartz grey painted steel.
PATO 4 LEG. Model 4202.
Upholstery: Sunniva 2 242
Base: Quartz grey painted steel.
PATO 4 LEG. Model 4200.
Shell: Quartz grey polypropylene.
Base: Quartz grey painted steel.
TARO TABLE. Model 6106.
Wood: Oak oiled.

PATO ON THE PATIO

Outdoor

One of the many advantages of Pato's durable, injection-moulded seating is that it's equally suited for sitting outside. Choose from a curated selection of neutral nordic colours. Add some cushions or throws. And blur the boundaries between indoor and outdoor furniture by creating a truly tranquil atmosphere. With chairs that let you sit back and relax for hours.





PATO SLEDGE. Model 4100. Shell:
Polypropylene Dark Grey.
Base: Black painted steel.

PREVIOUS PAGE
PATO SLEDGE. Model 4100.
Shell: Polypropylene Quartz Grey.
Base: Quartz grey painted steel.
PATO BENCH. Model 4340.
Shell: Polypropylene Quartz Grey.
Base: Quartz grey painted steel.

RIGHT
PATO SLEDGE. Model 4100.
Shell: Polypropylene Quartz Grey.
Base: Black painted steel.



The Pato colour palette

The standard colours are applied to coloured-through polypropylene (PP) and frame powder coating in the Pato Collection. Each of the 12 standard colours is chosen to complement Fredericia's signature choice of natural woods, leathers and fabrics. Enjoy our palette of understated, elegant colours that can be used across all our colour worlds.





PATO 4 LEG. Model 4200.
Shell: Polypropylene Storm.
Base: Storm painted steel.
PATO 4 LEG. Model 4102.
Upholstery: Vidar 554.
Base: Dark blue painted steel.
PATO 4 LEG. Model 4100.
Shell: Polypropylene Dark Blue.
Base: Dark blue painted steel.
PATO 4 LEG. Model 4102.
Upholstery: Waterborn 753.
Base: Storm painted steel.

COLOUR MATCH

Pato can be upholstered in all fabrics and leathers from Fredericia's standard collection.



Black



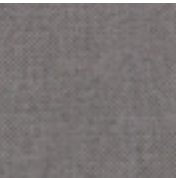
White



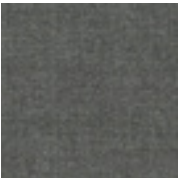
Dark Grey



Connect 60999



Re-wool 108



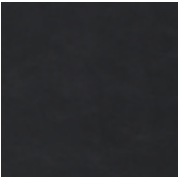
Remix 2 163



Re-wool 198



Capture 4201



Leather 301

COLOUR MATCH



Quartz Grey



Stone



Sand



Ancient Green



Dark Blue



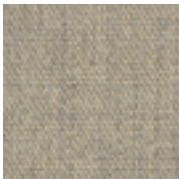
Storm



Connect 60146



Connect 60147



Connect 61207



Connect 67115



Connect 65127



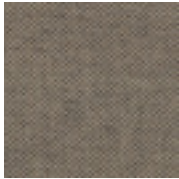
Connect 66205



Remix 143



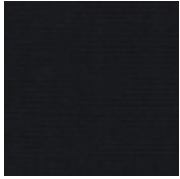
Remix 123



Re-wool 218



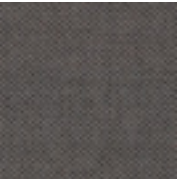
Remix 973



Remix 196



Remix 2 733



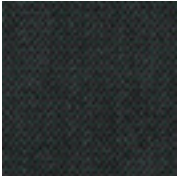
Re-wool 158



Re-wool 108



Capture 4101



Capture 7101



Capture 5201



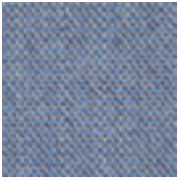
Re-wool 768



Capture 4201



Capture 4101



Capture 4902

COLOUR MATCH

COLOUR MATCH



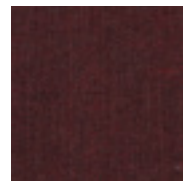
Dark Red



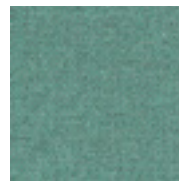
Ocean



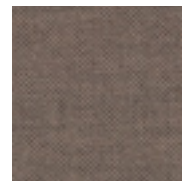
Powder Nude



Remix 662



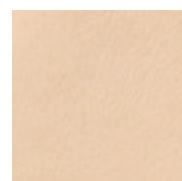
Connect 67113



Re-wool 628



Re-wool 868



Leather 90

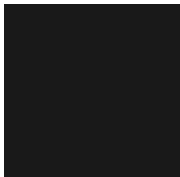
PATO 4 LEG. Model 4102.
Upholstery: Fiord 581.
Base: Dark Red painted steel.
PATO 4 LEG. Model 4100.
Shell: Polypropylene Dark Red.
Base: Dark red painted steel.
PATO 4 LEG. Model 4102.
Upholstery: Rime 591.
Base: Dark Red painted steel.
PATO 4 LEG. Model 4102.
Upholstery: Leather 84 Dark Red.
Base: Dark red painted steel.



STANDARD BASE OPTIONS



Chrome



Black

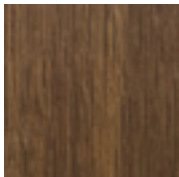


Polished aluminum
(Swivel bases)

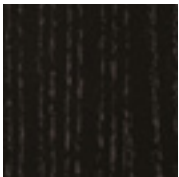
WOOD BASE



Oak lacquered



Smoked oak stained



Oak black lacquered

For projects with a minimum of 300 chairs, you can choose your own colour scheme for both shells and frames.
Please note that the printed colours may vary from the original colour.

PATO STANDARD FABRICS

All fabrics and leathers in our standard collection.
Suggestions for colour-coordinated combinations of shell and upholstery
can be found in the “Fredericia Colour Worlds” catalogue and at
[fredericia.com](https://www.fredericia.com)

CUSTOMISATION

For full availability and pricegroups please refer to our current pricelist.
Fredericia offers C.O.M. and C.O.L upon approval by our team of
upholsterers - see more at [frederica.com](https://www.frederica.com)

FEATURES

Pato is a versatile design with numerous variants, able to meet any possible demand in virtually any type of contemporary public space.



Chair suspensions (1069)



Bench



Base coupling



Trolley



Coupling fixture



Arms for suspension



Felt glides



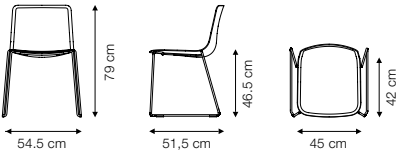
Notch for easy carrying



The Pato Collection

4100 – PATO SLEDGE

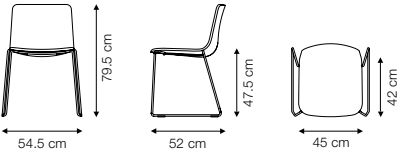
Polypropylene



Category	Stackable chair.	Colours	Shell: 12 standard colours. Custom colours available at mimium orders. Frame: Chrome or black. Standard colours with upcharge. Custom colours on request.
Materials	Shell of 100% coloured-through polypropylene. Frame of solid steel, chromed or powder coated. Plastic glides.	Environmental	Pure polypropylene is 100% recyclable. No chemical exposure. The chair can be disassembled for sorting at source.
Accessories	Glides with felt. Suspension frames for tables. Mounted ganging device at floor. Shell notch for carrying. Transport trolley.	Quick-ship	Shell: Black. Frame: Chrome or black.
Stackability	25 pcs on trolley, 18 pcs on floor.		
Weight	6.2 kg.		
Package size	0.36 m3 (3 Pcs.)		
Test	Flamability PP shell: EN-1021-1, EN-1021-2. Strength: DIN EN 16139:2014 AfPS GS 2014:01 PAK - Test level 1, With powder coated frame suitable for outdoor use: EN 9227).		

4102 – PATO SLEDGE

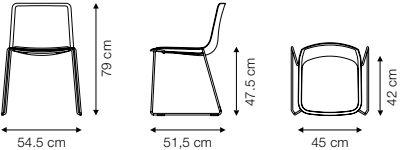
Fully upholstered



Category	Stackable chair.	Colours	Frame: Chrome or black. Standard colours with upcharge. Custom colours on request. Upholstery: Fabric or leather.
Materials	Inner shell of recycled 100% polypropylene. Upholstered with CMHR or HR foam and covered in fabric or leather. Frame of solid steel, chromed or powder coated. Plastic glides.	Environmental	Pure polypropylene is 100% recyclable. No chemical exposure. The chair can be disassembled for sorting at source.
Accessories	Glides with felt. Suspension frames for tables. Mounted ganging device at floor. Transport trolley.		
Stackability	23 pcs on trolley, 16 pcs on floor.		
Weight	7.2 kg.		
Package size	0.36 m3 (3 Pcs.)		
Test	Flamability PP shell: EN-1021-1, EN-1021-2. Strength: DIN EN 16139:2014 AfPS GS 2014:01 PAK - Test level 1. On request: BS 5852:part2 CRIB5, Cal TB 117.		

4101 – PATO SLEDGE

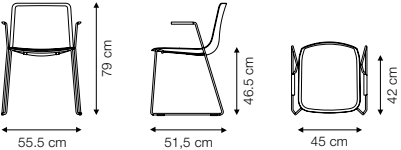
Polypropylene, seat upholstered



Category	Stackable chair.	Colours	Shell: 12 standard colours. Custom colours available at mimium orders. Frame: Chrome or black. Standard colours with upcharge. Custom colours on request. Upholstery: Fabric or leather.
Materials	Shell of 100% coloured-through polypropylene. Mounted plywood seat pad upholstered with CMHR or HR foam and covered in fabric or leather. Frame of solid steel, chromed or powder coated. Plastic glides.	Environmental	Pure polypropylene is 100% recyclable. No chemical exposure. The chair can be disassembled for sorting at source.
Accessories	Glides with felt. Suspension frames for tables. Mounted ganging device at floor. Shell notch for carrying. Transport trolley.		
Stackability	20 pcs on trolley, 14 pcs on floor.		
Weight	6.7 kg.		
Package size	0.36 m3 (3 Pcs.)		
Test	Flamability PP shell: EN-1021-1, EN-1021-2. Strength: DIN EN 16139:2014 AfPS GS 2014:01 PAK - Test level 1. On request: BS 5852:part2 CRIB5, Cal TB 117.		

4110 – PATO SLEDGE ARMCHAIR

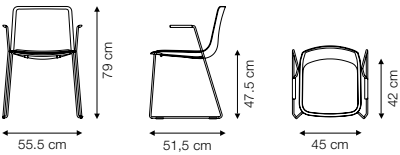
Polypropylene



Category	Stackable chair.	Colours	Shell: 12 standard colours. Custom colours available at mimium orders. Frame: Chrome or black. Standard colours with upcharge. Custom colours on request. Armrests: Black rubber.
Materials	Shell of 100% coloured-through polypropylene. Arms of black rubber. Frame of solid steel, chromed or powder coated. Plastic glides.	Environmental	Pure polypropylene is 100% recyclable. No chemical exposure. The chair can be disassembled for sorting at source.
Accessories	Glides with felt. Suspension frames for tables (please notice that the chair's arms can be used for suspention on any table top). Mounted ganging device at floor. Shell notch for carrying. Transport trolley.		
Stackability	18 pcs on trolley, 13 pcs on floor.		
Weight	6.8 kg.		
Package size	0.36 m3 (3 Pcs.)		
Test	Flamability PP shell: EN-1021-1, EN-1021-2. Strength: EN 16139:2013, DIN EN 16139:2014 AfPS GS 2014:01 PAK - Test level 1.		

4111 – PATO SLEDGE ARMCHAIR

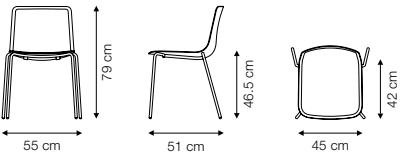
Polypropylene, seat upholstered



Category	Stackable chair.	Colours	Shell: 12 standard colours. Custom colours available at mimium orders. Frame: Chrome or black. Standard colours with upcharge. Custom colours on request. Armrests: Black rubber. Upholstery: Fabric or leather.
Materials	Shell of 100% coloured-through polypropylene. Mounted plywood seat pad upholstered with CMHR or HR foam and covered in fabric or leather. Arms of black rubber. Frame of solid steel, chromed or powder coated. Plastic glides.	Environmental	Pure polypropylene is 100% recyclable. No chemical exposure. The chair can be disassembled for sorting at source.
Accessories	Glides with felt. Suspension frames for tables Mounted ganging device at floor. Shell notch for carrying. Transport trolley.		
Stackability	14 pcs on trolley, 9 pcs on floor.		
Weight	7.3 kg.		
Package size	0.36 m3 (3 Pcs.)		
Test	Flamability PP shell: EN-1021-1, EN-1021-2. Strength: EN 1022:2005, EN 16139:2013, DIN EN 16139:2014 AfPS GS 2014:01 PAK - Test level 1. On request: BS 5852:part2 CRIB5, Cal TB 117.		

4200 – PATO 4 LEG

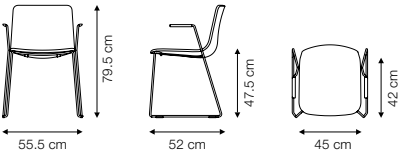
Polypropylene



Category	Stackable chair.	Colours	Shell: 12 standard colours. Custom colours available at mimium orders. Frame: Chrome or black. Standard colours with upcharge. Custom colours on request.
Materials	Shell of 100% coloured-through polypropylene. Frame of steel tube, chromed or powder coated. Plastic glides.	Environmental	Pure polypropylene is 100% recyclable. No chemical exposure. The chair can be disassembled for sorting at source.
Accessories	Glides with felt. Suspension frames for tables. Ganging at seat level. Shell notch for carrying. Transport trolley.	Quick-ship	Shell: Black. Frame: Chrome or black.
Stackability	25 pcs on trolley, 18 pcs on floor.		
Weight	5.4 kg.		
Package size	0.48 m3 (4 Pcs.)		
Test	Flamability PP shell: EN-1021-1, EN-1021-2. Strength: DIN EN 16139:2014 AfPS GS 2014:01 PAK - Test level 1, With powder coated frame suitable for outdoor use: EN 9227).		

4112 – PATO SLEDGE ARMCHAIR

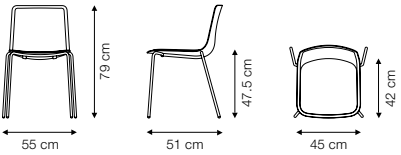
Fully upholstered



Category	Stackable chair.	Colours	Frame: Chrome or black. Standard colours with upcharge. Custom colours on request. Armrests: Black rubber. Upholstery: Fabric or leather.
Materials	Inner shell of recycled 100% polypropylene. Upholstered with CMHR or HR foam and covered in fabric or leather. Frame of solid steel, chromed or powder coated. Plastic glides. Arms with black rubber.	Environmental	Pure polypropylene is 100% recyclable. No chemical exposure. The chair can be disassembled for sorting at source.
Accessories	Glides with felt. Suspension frames for tables. Mounted ganging device at floor. Transport trolley.		
Stackability	16 pcs on trolley, 11 pcs on floor.		
Weight	7.8 kg.		
Package size	0.36 m3 (3 Pcs.)		
Test	Flamability PP shell: EN-1021-1, EN-1021-2. Strength: EN 1022:2005, EN 16139:2013, DIN EN 16139:2014 AfPS GS 2014:01 PAK - Test level 1. On request: BS 5852:part2 CRIB5, Cal TB 117.		

4201 – PATO 4 LEG

Polypropylene, seat upholstered



Category	Stackable chair.	Colours	Shell: 12 standard colours. Custom colours available at mimium orders. Frame: Chrome or black. Standard colours with upcharge. Custom colours on request. Upholstery: Fabric or leather.
Materials	Shell of 100% coloured-through polypropylene. Mounted plywood seat pad upholstered with CMHR or HR foam and covered in fabric or leather. Frame of steel tube, chromed or powder coated. Plastic glides.	Environmental	Pure polypropylene is 100% recyclable. No chemical exposure. The chair can be disassembled for sorting at source.
Accessories	Glides with felt. Suspension frames for tables. Ganging at seat level. Shell notch for carrying. Transport trolley.		
Stackability	20 pcs on trolley, 14 pcs on floor.		
Weight	5.9 kg.		
Package size	0.36 m3 (3 Pcs.)		
Test	Flamability PP shell: EN-1021-1, EN-1021-2. Strength: EN 1022:2005, DIN EN 16139:2014 AfPS GS 2014:01 PAK - Test level 1. On request: BS 5852:part2 CRIB5, Cal TB 117.		

4202 – PATO 4 LEG

Fully upholstered

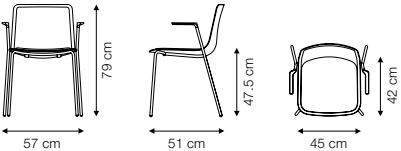


Category	Stackable chair.
Materials	Inner shell of recycled 100% polypropylene. Upholstered with CMHR or HR foam and covered in fabric or leather. Frame of steel tube, chromed or powder coated. Plastic glides.
Accessories	Glides with felt. Suspension frames for tables. Ganging at seat level. Transport trolley.
Stackability	23 pcs on trolley, 16 pcs on floor.
Weight	6.4 kg.
Package size	0.36 m3 (3 Pcs.)
Test	Flamability PP shell: EN-1021-1, EN-1021-2. Strength: DIN EN 16139:2014 AfPS GS 2014:01 PAK - Test level 1. On request: BS 5852:part2 CRIB5, Cal TB 117.

Colours	Frame: Chrome or black. Standard colours with upcharge. Custom colours on request. Upholstery: Fabric or leather.
Environmental	Pure polypropylene is 100% recyclable. No chemical exposure. The chair can be disassembled for sorting at source.

4211 – PATO 4 LEG ARMCHAIR

Polypropylene, seat upholstered

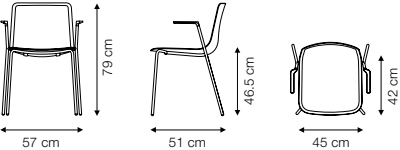


Category	Stackable chair.
Materials	Shell of 100% coloured-through polypropylene. Mounted plywood seat pad upholstered with CMHR or HR foam and covered in fabric or leather. Arms of black rubber. Frame of steel tube, chromed or powder coated. Plastic glides.
Accessories	Glides with felt. Suspension frames for tables. Ganging at seat level. Shell notch for carrying. Transport trolley.
Stackability	14 pcs on trolley, 9 pcs on floor.
Weight	6.4 kg.
Package size	0.36 m3 (3 Pcs.)
Test	Flamability PP shell: EN-1021-1, EN-1021-2. Strength: EN 1022:2005, EN 16139:2013, DIN EN 16139:2014 AfPS GS 2014:01 PAK - Test level 1. On request: BS 5852:part2 CRIB5,Cal TB 117.

Colours	Shell: 12 standard colours. Custom colours available at mimium orders. Frame: Chrome or black. Standard colours with upcharge. Custom colours on request. Armrests: Black rubber. Upholstery: Fabric og leather.
Environmental	Pure polypropylene is 100% recyclable. No chemical exposure. The chair can be disassembled for sorting at source.

4210 – PATO 4 LEG ARMCHAIR

Polypropylene



Category	Stackable chair.
Materials	Shell of 100% coloured-through polypropylene. Arms of black rubber. Frame of steel tube, chromed or powder coated. Plastic glides.
Accessories	Glides with felt. Suspension frames for tables (please notice that the chair's arms can be used for suspension on any table top). Ganging at seat level. Shell notch for carrying. Transport trolley.
Stackability	18 pcs on trolley, 13 pcs on floor.
Weight	5.9 kg.
Package size	0.48 m3 (4 Pcs.)
Test	Flamability PP shell: EN-1021-1, EN-1021-2. Strength: EN 16139:2013, DIN EN 16139:2014 AfPS GS 2014:01 PAK - Test level 1.

Colours	Shell: 12 standard colours. Custom colours available at mimium orders. Frame: Chrome or black. Standard colours with upcharge. Custom colours on request. Armrests: Black rubber.
Environmental	Pure polypropylene is 100% recyclable. No chemical exposure. The chair can be disassembled for sorting at source.

4212 – PATO 4 LEG ARMCHAIR

Fully upholstered

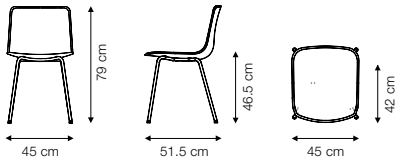


Category	Stackable chair.
Materials	Inner shell of recycled 100% polypropylene. Upholstered with CMHR or HR foam and covered in fabric or leather. Arms of black rubber. Frame of steel tube, chromed or powder coated. Plastic glides.
Accessories	Glides with felt. Suspension frames for tables. Ganging at seat level. Transport trolley.
Stackability	16 pcs on trolley, 11 pcs on floor.
Weight	6.9 kg.
Package size	0.36 m3 (3 Pcs.)
Test	Flamability PP shell: EN-1021-1, EN-1021-2. Strength: EN 1022:2005, EN 16139:2013, DIN EN 16139:2014 AfPS GS 2014:01 PAK - Test level 1. On request: BS 5852:part2 CRIB5, Cal TB 117.

Colours	Frame: Chrome or black. Standard colours with upcharge. Custom colours on request. Armrests: Black rubber. Upholstery: Fabric or leather.
Environmental	Pure polypropylene is 100% recyclable. No chemical exposure. The chair can be disassembled for sorting at source.

4250 – PATO 4 LEG CENTER

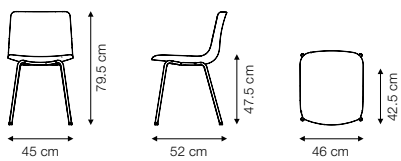
Polypropylene



Category	Non-stackable chair.	Colours	Shell: 12 standard colours. Custom colours available at mimium orders. Frame: Chrome or black. Standard colours with upcharge. Custom colours on request.
Materials	Shell of 100% coloured-through polypropylene. Frame of steel tube, chromed or powder coated. Plastic glides.	Environmental	Pure polypropylene is 100% recyclable. No chemical exposure. The chair can be disassembled for sorting at source.
Accessories	Glides with felt. Suspension frames for tables. Shell notch for carrying.		
Weight	5.0 kg.		
Package size	0,4 m3 (2 Pcs.)		
Test	Flamability PP shell: EN-1021-1, EN-1021-2. Strength: EN 1022:2005, EN 16139:2013.		

4252 – PATO 4 LEG CENTER

Fully upholstered



Category	Non-stackable chair.	Colours	Shell: 12 standard colours. Custom colours available at mimium orders. Frame: Chrome or black. Standard colours with upcharge. Custom colours on request.
Materials	Inner shell of recycled 100% polypropylene. Upholstered with CMHR or HR foam and covered in fabric or leather. Frame of steel tube, chromed or powder coated. Plastic glides.	Environmental	Pure polypropylene is 100% recyclable. No chemical exposure. The chair can be disassembled for sorting at source.
Accessories	Glides with felt. Suspension frames for tables.		
Weight	6 kg.		
Package size	0.4 m3 (2 Pcs.)		
Test	Flamability PP shell: EN-1021-1, EN-1021-2. Strength: EN 1022:2005, EN 16139:2013. On request: BS 5852:part2 CRIB5, Cal TB 117.		

4251 – PATO 4 LEG CENTER

Polypropylene, seat upholstered



Category	Non-stackable chair.	Colours	Shell: 12 standard colours. Custom colours available at mimium orders. Frame: Chrome or black. Standard colours with upcharge. Custom colours on request.
Materials	Shell of 100% coloured-through polypropylene. Mounted plywood seat pad upholstered with CMHR or HR foam and covered in fabric or leather. Frame of steel tube, chromed or powder coated. Plastic glides.	Environmental	Pure polypropylene is 100% recyclable. No chemical exposure. The chair can be disassembled for sorting at source.
Accessories	Glides with felt. Suspension frames for tables. Shell notch for carrying.		
Weight	5.5 kg.		
Package size	0,4 m3 (2 Pcs.)		
Test	Flamability PP shell: EN-1021-1, EN-1021-2. Strength: EN 1022:2005, EN 16139:2013. On request: BS 5852:part2 CRIB5, Cal TB 117.		

4225 – PATO WOOD BASE

Polypropylene



Category	Non-stackable chair.	Colours	Shell: 12 standard colours. Custom colours available at mimium orders. Frame: Oak lacquered, oak black lacquered, smoked oak stained.
Materials	Shell of 100% coloured-through polypropylene. Legs of solid wood.	Environmental	Pure polypropylene is 100% recyclable. No chemical exposure. The chair can be disassembled for sorting at source. Wood from responsible forests. Renewable resource.
Accessories	Quick-click glides with plastic or felt. Suspension frames for tables. Shell notch for carrying.		
Weight	4.6 kg.		
Package size	0.4 m3 (2 Pcs.)		
Test	Flamability PP shell: EN-1021-1, EN-1021-2. Strength: EN 1022:2005, EN 16139:2013.		

4226 – PATO WOOD BASE

Polypropylene, seat upholstered



Category	Non-stackable chair.
Materials	Shell of 100% coloured-through polypropylene. Mounted plywood seat pad upholstered with CMHR or HR foam and covered in fabric or leather. Legs of solid wood.
Accessories	Quick-click glides with plastic or felt. Suspension frames for tables. Shell notch for carrying.
Weight	5.1 kg.
Package size	0.4 m3 (2 Pcs.)
Test	Flamability PP shell: EN-1021-1, EN-1021-2. Strength: EN 1022:2005, EN 16139:2013. On request: BS 5852:part2 CRIB5, Cal TB 117.

Colours	Shell: 12 standard colours. Custom colours available at mimium orders. Frame: Oak lacquered, oak black lacquered, smoked oak stained. Upholstery: Fabric or leather.
Environmental	Pure polypropylene is 100% recyclable. No chemical exposure. The chair can be disassembled for sorting at source. Wood from responsible forests. Renewable resource.

4000 – PATO SWIVEL

Polypropylene

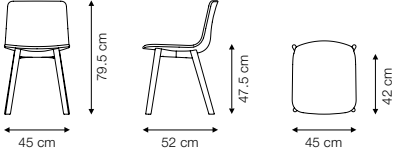


Category	Swivel chair.
Materials	Shell of 100% coloured-through polypropylene. 4-star revolving steel base, chromed or powder coated. Plastic glides.
Accessories	Glides with felt. Castors. Suspension frames for tables. Shell notch for carrying.
Weight	8.4 kg.
Package size	0.25 m3
Test	Flamability PP shell: EN-1021-1, EN-1021-2. Strength: EN 1022:2005, EN 16139:2013.

Colours	Shell: 12 standard colours. Custom colours available at mimium orders. Frame: Chrome or black. Standard colours with upcharge. Custom colours or request.
Environmental	Pure polypropylene is 100% recyclable. No chemical exposure. The chair can be disassembled for sorting at source.

4222 – PATO WOOD BASE

Fully upholstered



Category	Non-stackable chair.
Materials	Inner shell of recycled 100% polypropylene. Upholstered with CMHR or HR foam and covered in fabric or leather. Legs of solid wood.
Accessories	Quick-click glides with plastic or felt. Suspension frames for tables.
Weight	5.6 kg.
Package size	0.4 m3 (2 Pcs.)
Test	Flamability PP shell: EN-1021-1, EN-1021-2. Strength: EN 1022:2005, EN 16139:2013. On request: BS 5852:part2 CRIB5, Cal TB 117.

Colours	Frame: Oak lacquered, oak black lacquered, smoked oak stained. Upholstery: Fabric or leather.
Environmental	Pure polypropylene is 100% recyclable. No chemical exposure. The chair can be disassembled for sorting at source. Wood from responsible forests. Renewable resource.

4001 – PATO SWIVEL

Polypropylene, seat upholstered



Category	Swivel chair.
Materials	Shell of 100% coloured-through polypropylene. Mounted plywood seat pad upholstered with CMHR or HR foam and covered in fabric or leather. 4-star revolving steel base, chromed or powder coated. Plastic glides.
Accessories	Glides with felt. Castors. Suspension frames for tables. Shell notch for carrying.
Weight	8.9 kg.
Package size	0.25 m3
Test	Flamability PP shell: EN-1021-1, EN-1021-2. Strength: EN 1022:2005, EN 16139:2013. On request: BS 5852:part2 CRIB5, Cal TB 117.

Colours	Shell: 12 standard colours. Custom colours available at mimium orders. Frame: Chrome or black. Standard colours with upcharge. Custom colours on request. Upholstery: Fabric or leather.
Environmental	Pure polypropylene is 100% recyclable. No chemical exposure. The chair can be disassembled for sorting at source.

4002 – PATO SWIVEL

Fully upholstered



Category	Swivel chair.
Materials	Inner shell of recycled 100% polypropylene. Upholstered with CMHR or HR foam and covered in fabric or leather. 4-star revolving steel base, chromed or powder coated. Plastic glides.
Accessories	Glides with felt. Castors. Suspension frames for tables.
Weight	9.4 kg.
Package size	0.25 m3
Test	Flamability PP shell: EN-1021-1, EN-1021-2. Strength: EN 1022:2005, EN 16139:2013. On request: BS 5852:part2 CRIB5, Cal TB 117.

Colours	Frame: Chrome or black. Standard colours with upcharge. Custom colours on request. Upholstery: Fabric or leather.
Environmental	Pure polypropylene is 100% recyclable. No chemical exposure. The chair can be disassembled for sorting at source.

4011 – PATO SWIVEL ARMCHAIR

Polypropylene, seat upholstered



Category	Swivel chair.
Materials	Shell of 100% coloured-through polypropylene. Mounted plywood seat pad upholstered with CMHR or HR foam and covered in fabric or leather. 4-star revolving steel base, chromed or powder coated. Plastic glides. Arms of rubber on tubular steel frame.
Accessories	Glides with felt. Castors. Suspension frames for tables (please notice that the chair's arms can be used for suspension on any table top). Shell notch for carrying.
Weight	10.5 kg.
Package size	0.25 m3
Test	Flamability PP shell: EN-1021-1, EN-1021-2. On request: BS 5852:part2 CRIB5, Cal TB 117.

Colours	Shell: 12 standard colours. Custom colours available at mimium orders. Frame: Chrome or black. Standard colours with upcharge. Custom colours on request. Armrests: Black rubber. Upholstery: Fabric or leather.
Environmental	Pure polypropylene is 100% recyclable. No chemical exposure. The chair can be disassembled for sorting at source.

4010 – PATO SWIVEL ARMCHAIR

Polypropylene



Category	Swivel chair.
Materials	Shell of 100% coloured-through polypropylene. 4-star revolving steel base, chromed or powder coated. Plastic glides. Arms of rubber on tubular steel frame.
Accessories	Glides with felt. Castors. Suspension frames for tables (please notice that the chair's arms can be used for suspension on any table top). Shell notch for carrying.
Weight	10 kg.
Package size	0.25 m³
Test	Flamability PP shell: EN-1021-1, EN-1021-2.

Colours	Shell 12 standard colours. Custom colours available at mimium orders. Frame: Chrome or black. Standard colours with upcharge. Custom colours on request. Armrests: Black rubber.
Environmental	Pure polypropylene is 100% recyclable. No chemical exposure. The chair can be disassembled for sorting at source.

4012 – PATO SWIVEL ARMCHAIR

Fully upholstered



Category	Swivel chair.
Materials	Inner shell of recycled 100% polypropylene. Upholstered with CMHR or HR foam and covered in fabric or leather. 4-star revolving steel base, chromed or powder coated. Plastic glides. Arms of rubber on tubular steel frame.
Accessories	Glides with felt. Castors. Suspension frames for tables (please notice that the chair's arms can be used for suspension on any table top).
Weight	11.0 kg.
Package size	0.25 m3
Test	Flamability PP shell: EN-1021-1, EN-1021-2. On request: BS 5852:part2 CRIB5, Cal TB 117.

Colours	Frame: Chrome or black. Standard colours with upcharge. Custom colours on request. Armrests: Black rubber. Upholstery: Fabric or leather.
Environmental	Pure polypropylene is 100% recyclable. No chemical exposure. The chair can be disassembled for sorting at source.

4020 – PATO OFFICE

Polypropylene



Category	Adjustable swivel chair.	Colours	Shell: 12 standard colours. Custom colours available at mimium orders. Frame: Chrome or black. Standard colours with upcharge. Custom colours on request.
Materials	Shell of 100% coloured-through polypropylene. 5-star revolving steel base with castors, chromed or powder coated. Height adjustable with gas lift. Seat has stepless front tilt.	Environmental	Pure polypropylene is 100% recyclable. No chemical exposure. The chair can be disassembled for sorting at source.
Accessories	Suspension frames for tables (please notice that the chair's arms can be used for suspenion on any table top). Shell notch for carrying.		
Weight	9.7 kg.		
Package size	0.42 m3		
Test	Flamability PP shell: EN-1021-1, EN-1021-2.		

4022 – PATO OFFICE

Fully upholstered



Category	Adjustable swivel chair.	Colours	Frame: Chrome or black. Standard colours with upcharge. Custom colours on request. Upholstery: Fabric or leather.
Materials	Inner shell of recycled 100% polypropylene. Upholstered with CMHR or HR foam and covered in fabric or leather. 5-star revolving steel base with castors, chromed or powder coated. Height adjustable with gas lift. Seat has stepless front tilt.	Environmental	Pure polypropylene is 100% recyclable. No chemical exposure. The chair can be disassembled for sorting at source.
Accessories	Suspension frames for tables (please notice that the chair's arms can be used for suspension on any table top).		
Weight	10.7 kg.		
Package size	0.42 m3		
Test	Flamability PP shell: EN-1021-1, EN-1021-2. On request: BS 5852:part2 CRIB5, Cal TB 117.		

4021 – PATO OFFICE

Polypropylene, seat upholstered



Category	Adjustable swivel chair.	Colours	Shell: 12 standard colours. Custom colours available at mimium orders. Frame: Chrome or black. Standard colours with upcharge. Custom colours on request. Upholstery: Fabric or leather.
Materials	Shell of 100% coloured-through polypropylene. Mounted plywood seat pad upholstered with CMHR or HR foam and covered in fabric or leather. 5-star revolving steel base with castors, chromed or powder coated. Height adjustable with gas lift. Seat has stepless front tilt.	Environmental	Pure polypropylene is 100% recyclable. No chemical exposure. The chair can be disassembled for sorting at source.
Accessories	Suspension frames for tables (please notice that the chair's arms can be used for suspenion on any table top). Shell notch for carrying.		
Weight	10.2 kg.		
Package size	0.42 m3		
Test	Flamability PP shell: EN-1021-1, EN-1021-2. On request: BS 5852:part2 CRIB5, Cal TB 117.		

4030 – PATO OFFICE ARMCHAIR

Polypropylene



Category	Adjustable swivel chair.	Colours	Shell: 12 standard colours. Custom colours available at mimium orders. Frame: Chrome or black. Standard colours with upcharge. Custom colours on request. Armrests: Black rubber.
Materials	Shell of 100% coloured-through polypropylene. 5-star revolving steel base with castors, chromed or powder coated. Height adjustable with gas lift. Seat has stepless front tilt. Arms of rubber on tubular steel frame.	Environmental	Pure polypropylene is 100% recyclable. No chemical exposure. The chair can be disassembled for sorting at source.
Accessories	Suspension frames for tables (please notice that the chair's arms can be used for suspension on any table top). Shell notch for carrying.		
Weight	9.9 kg.		
Package size	0.42 m3		
Test	Flamability PP shell: EN-1021-1, EN-1021-2.		

4031 – PATO OFFICE ARMCHAIR

Polypropylene, seat upholstered



Category	Adjustable swivel chair.	Colours	Shell: 12 standard colours. Custom colours available at mimum orders. Frame: Chrome or black. Standard colours with upcharge. Custom colours on request. Armrests: Black rubber. Upholstery: Fabric or leather.
Materials	Shell of 100% coloured-through polypropylene. Mounted plywood seat pad upholstered with CMHR or HR foam and covered in fabric or leather. 5-star revolving steel base, height adjustable with gas lift, chromed or powder coated. Seat has stepless front tilt. Arms of rubber on tubular steel frame.	Environmental	Pure polypropylene is 100% recyclable. No chemical exposure. The chair can be disassembled for sorting at source.
Accessories	Suspension frames for tables (please notice that the chair's arms can be used for suspension on any table top). Shell notch for carrying.		
Weight	10.4 kg.		
Package size	0.42 m3		
Test	Flamability PP shell: EN-1021-1, EN-1021-2. On request: BS 5852:part2 CRIB5, Cal TB 117.		

4052 – PATO EXECUTIVE

Fully upholstered



Category	Swivel chair.	Colours	Frame: Chrome or black. Standard colours with upcharge. Custom colours on request. Armrests: Black rubber. Upholstery: Fabric or leather.
Materials	Inner shell of plywood. Upholstered with CMHR or HR foam and covered in fabric or leather. 4-star revolving steel base, chromed or powder coated. Plastic glides. Arms of rubber on steel frame.	Environmental	Wood from responsible forests. Renewable resource. No chemical exposure. The chair can be disassembled for sorting at source.
Accessories	Glides with felt.		
Weight	10.5 kg.		
Package size	0.32 m3		
Test	Flamability: EN-1021-1, EN-1021-2. Strength: EN 1022:2005, EN 16139:2013. On request: BS 5852:part2 CRIB5, Cal TB 117.		

4032 – PATO OFFICE ARMCHAIR

Fully upholstered



Category	Adjustable swivel chair.	Colours	Frame: Chrome or black. Standard colours with upcharge. Custom colours on request. Armrests: Black rubber. Upholstery: Fabric or leather.
Materials	Inner shell of recycled 100% polypropylene. Upholstered with CMHR or HR foam and covered in fabric or leather. 5-star revolving steel base with castors, chromed or powder coated. Height adjustable with gas lift. Seat has stepless front tilt. Arms of rubber on tubular steel frame.	Environmental	Pure polypropylene is 100% recyclable. No chemical exposure. The chair can be disassembled for sorting at source.
Accessories	Suspension frames for tables (please notice that the chair's arms can be used for suspension on any table top).		
Weight	10.9 kg.		
Package size	0.42 m3		
Test	Flamability PP shell: EN-1021-1, EN-1021-2. On request: BS 5852:part2 CRIB5, Cal TB 117.		

4072 – PATO EXECUTIVE OFFICE

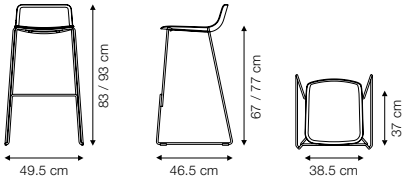
Fully upholstered



Category	Adjustable swivel chair.	Colours	Frame: Chrome or black. Standard colours with upcharge. Custom colours on request. Armrests: Black rubber. Upholstery: Fabric or leather.
Materials	Inner shell of plywood. Upholstered with CMHR or HR foam and covered in fabric or leather. 5-star revolving steel base with castors, chromed or powder coated. Height adjustable with gas lift. Seat has stepless front tilt. Arms of rubber on steel frame.	Environmental	Wood from responsible forests. Renewable resource. No chemical exposure. The chair can be disassembled for sorting at source.
Weight	11.9 kg.		
Package size	0.32 m3		
Test	Flamability: EN-1021-1, EN-1021-2. Strength: EN 1022:2005. On request: BS 5852:part2 CRIB5, Cal TB 117.		

4310 – PATO SLEDGE STOOL

Polypropylene

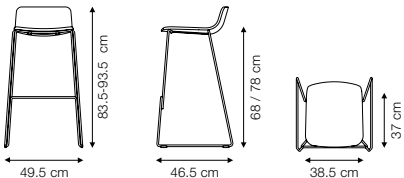


Category	Stackable barstool.
Materials	Shell of 100% coloured-through polypropylene. Frame of solid steel, chromed or powder coated. Plastic glides.
Accessories	Glides with felt.
Stackability	14 pcs on floor.
Weight	5.8 / 6.1 kg.
Package size	0.34 m3 (2 Pcs.)
Test	Flamability PP shell: EN-1021-1, EN-1021-2. Strength: EN 1022:2005, EN 16139:2013.

Colours	Shell: 12 standard colours. Custom colours available at mimium orders. Frame: Chrome or black. Standard colours with upcharge. Custom colours on request.
Environmental	Pure polypropylene is 100% recyclable. No chemical exposure. The chair can be disassembled for sorting at source.

4312 – PATO SLEDGE STOOL

Fully upholstered

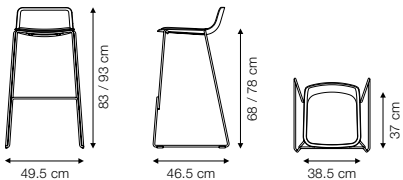


Category	Stackable barstool.
Materials	Inner shell of recycled 100% polypropylene. Upholstered with CMHR or HR foam and covered in fabric or leather. Frame of solid steel, chromed or powder coated. Plastic glides.
Accessories	Glides with felt.
Stackability	12 pcs on floor.
Weight	6.8 / 7.1 kg.
Package size	0.34 m3 (2 Pcs.)
Test	Flamability PP shell: EN-1021-1, EN-1021-2. Strength: EN 1022:2005, EN 16139:2013. On request: BS 5852:part2 CRIB5, Cal TB 117.

Colours	Frame: Chrome or black. Standard colours with upcharge. Custom colours on request. Upholstery: Fabric or leather.
Environmental	Pure polypropylene is 100% recyclable. No chemical exposure. The chair can be disassembled for sorting at source.

4311 – PATO SLEDGE STOOL

Polypropylene, seat upholstered

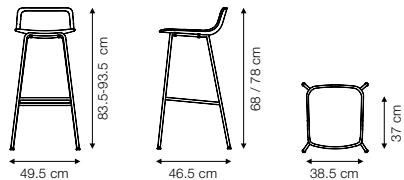


Category	Stackable barstool.
Materials	Shell of 100% coloured-through polypropylene. Mounted plywood seat pad upholstered with CMHR or HR foam and covered in fabric or leather. Frame of solid steel, chromed or powder coated. Plastic glides.
Accesories	Glides with felt.
Stackability	10 pcs on floor.
Weight	6.3 / 6.6 kg.
Package size	0.34 m3 (2 Pcs.)
Test	Flamability PP shell: EN-1021-1, EN-1021-2. Strength: EN 1022:2005, EN 16139:2013. On request: BS 5852:part2 CRIB5, Cal TB 117.

Colours	Shell: 12 standard colours. Custom colours available at mimium orders. Frame: Chrome or black. Standard colours with upcharge. Custom colours on request. Upholstery: Fabric og leather.
Environmental	Pure polypropylene is 100% recyclable. No chemical exposure. The chair can be disassembled for sorting at source.

4315 – PATO 4 LEG STOOL

Polypropylene

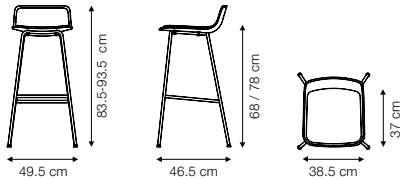


Category	Non-stackable barstool.
Materials	Shell of 100% coloured-through polypropylene. Frame of steel tube, chromed or powder coated. Plastic glides.
Accessories	Glides with felt.
Weight	5.0 / 5.3 kg.
Package size	0.32 m3 (1 Pcs.)
Test	Flamability PP shell: EN-1021-1, EN-1021-2. Strength: EN 1022:2005, EN 16139:2013.

Colours	Shell: 12 standard colours. Custom colours available at mimium orders. Frame: Chrome or black. Standard colours with upcharge. Custom colours on request.
Environmental	Pure polypropylene is 100% recyclable. No chemical exposure. The chair can be disassembled for sorting at source.

4316 – PATO 4 LEG STOOL

Polypropylene, seat upholstered

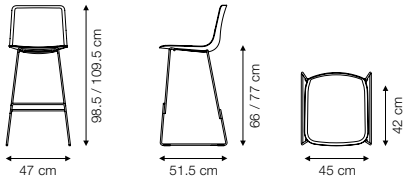


Category	Non-stackable barstool.
Materials	Shell of 100% coloured-through polypropylene. Mounted plywood seat pad upholstered with CMHR or HR foam and covered in fabric or leather. Frame of steel tube, chromed or powder coated. Plastic glides.
Accessories	Glides with felt.
Weight	5.5 / 5.8 kg.
Package size	0.32 m3 (1 Pcs.)
Test	Flamability PP shell: EN-1021-1, EN-1021-2. Strength: EN 1022:2005, EN 16139:2013. On request: BS 5852:part2 CRIB5, Cal TB 117.

Colours	Shell: 12 standard colours. Custom colours available at mimium orders. Frame: Chrome or black. Standard colours with upcharge. Custom colours on request.
Environmental	Pure polypropylene is 100% recyclable. No chemical exposure. The chair can be disassembled for sorting at source.

4300 – PATO SLEDGE BARSTOOL

Polypropylene

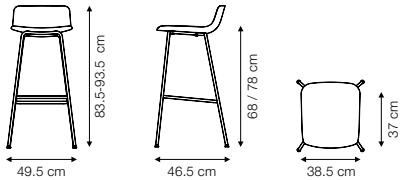


Category	Non-stackable barstool.
Materials	Shell of 100% coloured-through polypropylene. Frame of solid steel, chromed or powder coated. Plastic glides.
Accessories	Glides with felt. Suspension frame.
Weight	7.1 / 7.5 kg.
Package size	0.34 m3
Test	Flamability PP shell: EN-1021-1, EN-1021-2. Strength: EN 1022:2005, EN 16139:2013.

Colours	Shell: 12 standard colours. Custom colours available at mimium orders. Frame: Chrome or black. Standard colours with upcharge. Custom colours on request.
Environmental	Pure polypropylene is 100% recyclable. No chemical exposure. The chair can be disassembled for sorting at source.

4317 – PATO 4 LEG STOOL

Fully upholstered

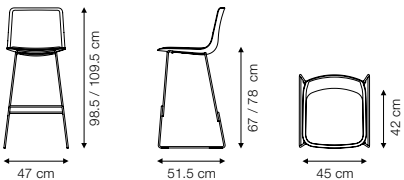


Category	Non-stackable barstool.
Materials	Inner shell of recycled 100% polypropylene. Upholstered with CMHR or HR foam and covered in fabric or leather. Frame of steel tube, chromed or powder coated. Plastic glides.
Accessories	Glides with felt.
Weight	6.0 kg / 6.3 kg.
Package size	0.32 m3 (1 Pcs.)
Test	Flamability PP shell: EN-1021-1, EN-1021-2. Strength: EN 1022:2005, EN 16139:2013. On request: BS 5852:part2 CRIB5, Cal TB 117.

Colours	Shell: 12 standard colours. Custom colours available at mimium orders. Frame: Chrome or black. Standard colours with upcharge. Custom colours on request.
Environmental	Pure polypropylene is 100% recyclable. No chemical exposure. The chair can be disassembled for sorting at source.

4301 – PATO SLEDGE BARSTOOL

Polypropylene, seat upholstered

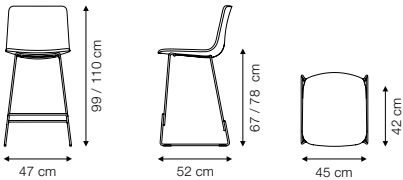


Category	Non-stackable barstool.
Materials	Shell of 100% coloured-through polypropylene. Mounted plywood plywood seat pad upholstered with CMHR or HR foam and covered in fabric or leather. Frame of solid steel, chromed or powder coated. Plastic glides.
Accessories	Glides with felt. Suspension frame.
Weight	7.6 / 8.0 kg.
Package size	0.34 m3
Test	Flamability PP shell: EN-1021-1, EN-1021-2. Strength: EN 1022:2005, EN 16139:2013. On request: BS 5852:part2 CRIB5, Cal TB 117.

Colours	Shell: 12 standard colours. Custom colours available at mimium orders. Frame: Chrome or black. Standard colours with upcharge. Custom colours on request. Upholstery: Fabric og leather.
Environmental	Pure polypropylene is 100% recyclable. No chemical exposure. The chair can be disassembled for sorting at source.

4302 – PATO SLEDGE BARSTOOL

Fully upholstered



Category	Non-stackable barstool.
Materials	Inner shell of recycled 100% polypropylene. Upholstered with CMHR or HR foam and covered in fabric or leather. Frame of solid steel, chromed or powder coated. Plastic glides.
Accessories	Glides with felt. Suspension frame.
Weight	8.1 / 8.5 kg.
Package size	0.34 m3
Test	Flamability PP shell: EN-1021-1, EN-1021-2. Strength: EN 1022:2005, EN 16139:2013. On request: BS 5852:part2 CRIB5, Cal TB 117.

Colours	Frame: Chrome or black. Standard colours with upcharge. Custom colours on request. Upholstery: Fabric or leather.
Environmental	Pure polypropylene is 100% recyclable. No chemical exposure. The chair can be disassembled for sorting at source.

4306 – PATO 4 LEG BARSTOOL

Polypropylene, seat upholstered



Category	Non-stackable barstool.
Materials	Shell of 100% coloured-through polypropylene. Mounted plywood seat pad upholstered with CMHR or HR foam and covered in fabric or leather. Frame of steel tube, chromed or powder coated. Plastic glides.
Accessories	Glides with felt. Suspension frame.
Weight	6.9 / 7.2 kg.
Package size	0.34 m3
Test	Flamability PP shell: EN-1021-1, EN-1021-2. Strength: EN 1022:2005, EN 16139:2013. On request: BS 5852:part2 CRIB5, Cal TB 117.

Colours	Shell: 12 standard colours. Custom colours available at mimium orders. Frame: Chrome or black. Standard colours with upcharge. Custom colours on request. Upholstery: Fabric or leather.
Environmental	Pure polypropylene is 100% recyclable. No chemical exposure. The chair can be disassembled for sorting at source.

4305 – PATO 4 LEG BARSTOOL

Polypropylene

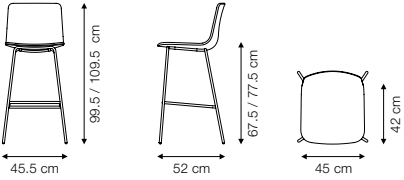


Category	Non-stackable barstool.
Materials	Shell of 100% coloured-through polypropylene. Frame of steel tube, chromed or powder coated. Plastic glides.
Accessories	Glides with felt. Suspension frame.
Weight	6.4 / 6.7 kg.
Package size	0.34 m3
Test	Flamability PP shell: EN-1021-1, EN-1021-2. Strength: EN 1022:2005, EN 16139:2013.

Colours	Shell: 12 standard colours. Custom colours available at mimium orders. Frame: Chrome or black. Standard colours with upcharge. Custom colours on request.
Environmental	Pure polypropylene is 100% recyclable. No chemical exposure. The chair can be disassembled for sorting at source.

4307 – PATO 4 LEG BARSTOOL

Fully upholstered

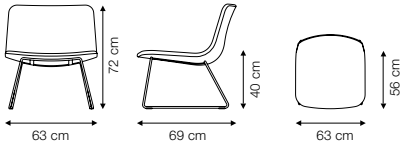


Category	Non-stackable barstool.
Materials	Inner shell of recycled 100% polypropylene. Upholstered with CMHR or HR foam and covered in fabric or leather. Frame of steel tube, chromed or powder coated. Plastic glides.
Accessories	Glides with felt. Suspension frame.
Weight	7.4 / 7.7 kg.
Package size	0.34 m3
Test	Flamability PP shell: EN-1021-1, EN-1021-2. Strength: EN 1022:2005, EN 16139:2013. On request: BS 5852:part2 CRIB5, Cal TB 117.

Colours	Frame: Chrome or black. Standard colours with upcharge. Custom colours on request. Upholstery: Fabric or leather.
Environmental	Pure polypropylene is 100% recyclable. No chemical exposure. The chair can be disassembled for sorting at source.

4372 – PATO LOUNGE SLEDGE

Fully upholstered

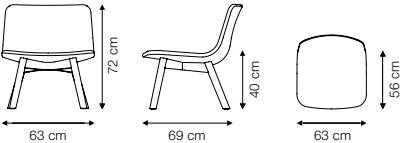


Category	Lounge chair.
Materials	Inner shell of plywood. Upholstered with CMHR or HR foam and covered in fabric or leather. Sledge base of solid steel, chromed or powder coated. Plastic glides.
Accessories	Glides with felt.
Weight	9 kg.
Package size	0.53 m3
Test	Strength: EN 1022:2005, EN 16139:2013. On request: BS 5852:part2 CRIB5, Cal TB 117.

Colours	Frame: Chrome or black. Standard colours with upcharge. Custom colours on request. Upholstery: Fabric or leather.
Environmental	Wood from responsible forests. Renewable resource. No chemical exposure. The chair can be disassembled for sorting at source.

4392 – PATO LOUNGE WOOD BASE

Fully upholstered

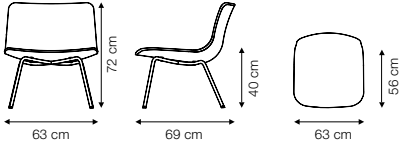


Category	Lounge chair.
Materials	Inner shell of plywood. Upholstered with CMHR or HR foam and covered in fabric or leather. Legs of solid wood.
Accessories	Quick-click glides with plastic or felt.
Weight	8.4 kg.
Package size	0.53 m3
Test	Strength: EN 1022:2005, EN 16139:2013. On request: BS 5852:part2 CRIB5, Cal TB 117.

Colours	Frame: Oak lacquered, oak black lacquered, smoked oak stained. Custom colours on request. Upholstery: Fabric or leather.
Environmental	Wood from responsible forests. Renewable resource. No chemical exposure. The chair can be disassembled for sorting at source.

4362 – PATO LOUNGE 4 LEG

Fully upholstered



Category	Lounge chair.
Materials	Inner shell of plywood. Upholstered with CMHR or HR foam and covered in fabric or leather. Frame of steel tube, chromed or powder coated. Plastic glides.
Accessories	Glides with felt.
Weight	8.4 kg.
Package size	0.53 m3
Test	Strength: EN 1022:2005, EN 16139:2013. On request: BS 5852:part2 CRIB5, Cal TB 117.

Colours	Frame: Chrome or black. Standard colours with upcharge. Custom colours on request. Upholstery: Fabric or leather.
Environmental	Wood from responsible forests. Renewable resource. No chemical exposure. The chair can be disassembled for sorting at source.

4382 – PATO LOUNGE SWIVEL

Fully upholstered

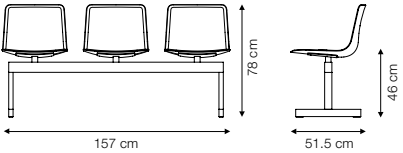


Category	Lounge chair.
Materials	Inner shell of plywood. Upholstered with CMHR or HR foam and covered in fabric or leather. 4-star revolving steel base, chromed or powder coated. Plastic glides.
Accessories	Glides with felt.
Weight	11 kg.
Package size	0.53 m3
Test	Strength: EN 16139:2013. On request: BS 5852:part2 CRIB5, Cal TB 117.

Colours	Frame: Chrome or black. Standard colours with upcharge. Custom colours on request. Upholstery: Fabric or leather.
Environmental	Wood from responsible forests. Renewable resource. No chemical exposure. The chair can be disassembled for sorting at source.

4330 – PATO BENCH 3 SEATS

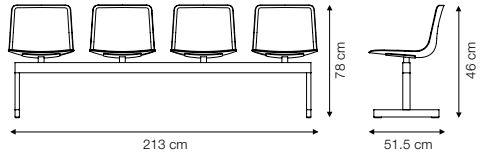
Polypropylene / Veneer



Category	Beam bench.	Colours	Shell: 12 standard colours. Custom colours available at mimum orders. Frame: Black. Custom colours on request.
Materials	Bench for floor or wall mounting. 3 seperate polypropylene or plywood shells mounted on steel beam. Optional upholstery with CMHR or HR foam and covered with fabric or leather. Frame of steel, chromed or powder coated.	Environmental	Pure polypropylene is 100% recyclable. No chemical exposure. The chair can be disassembled for sorting at source. Wood from responsible forests. Renewable resource.
Weight	27.5 kg.		
Package size	0.8 m3		

4340 – PATO BENCH 4 SEATS

Polypropylene / veneer



Category	Beam bench.	Colours	Shell: 12 standard colours. Custom colours available at mimum orders. Frame: Black. Custom colours on request.
Materials	Bench for floor or wall mounting. Four seperate polypropylene or plywood shells mounted on steel beam. Optional upholstery with CMHR or HR foam and covered with fabric or leather. Frame of steel, chromed or powder coated.	Environmental	Pure polypropylene 100% is recyclable. No chemical exposure. The chair can be disassembled for sorting at source. All spare parts made in the EU for reduced transport emmissions.
Weight	35.5 kg.		
Package size	1.1 m3		





info@fredericia.com
+45 7592 3344

HQ, Sales & production
Fredericia Furniture A/S
Treldevej 183
DK-7000 Fredericia
salesorder@fredericia.com

Fredericia Showroom Copenhagen
Løvstræde 1, 4+5 th. floor
DK-1152 Copenhagen

Fredericia Showroom LONDON
1 Dufferin StreetLondon, EC1Y 8NA

Fredericia Showroom OSLO
Drammensveien 130A, 0277 Oslo

Follow us



Thanks to
Astep, Birgitte Due & Jonas Trampedach, Flos, Mathias Moellenbach,
Massimo Copenhagen, Christel Thue, Sofie Østerby, Tora Frogner,
Linie Design, Anker & Co, Wästberg, Georg Jensen, Society Limonta,
Tortus Copenhagen, Laguna B, Bendtsens.



fredericia.com