

ALL **TECHNOPOLYMER FINISHES** **FINISHES** **TABLE TOP FINISHES** **FABRICS** **FABRICS FOR CUSHIONS** **MAINTENANCE**

FINISHES

STEEL AND STAINLESS STEEL

COATING IS POLYESTER POWDER



CR
chromed steel



IS
satin stainless steel



IL
polished stainless steel



OS
satin brass effect steel



NL
glossy black nickel steel



VB
mat white coated steel smooth finish



VL
mat linen coated steel embossed finish



VT
mat dove grey coated steel, embossed finish



VF
mat graphite coated steel, embossed finish



VA
mat anthracite grey coated steel, embossed finish



VN
mat black coated steel, embossed finish



KE
corten effect steel



VY
mat mustard yellow coated steel, embossed finish



VO
mat airforce blue coated steel, embossed finish

ALUMINIUM

COATING IS POLYESTER POWDER



AA
anodised aluminium



AV 10
mat white coated aluminium, embossed finish



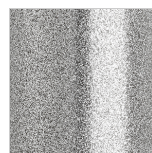
AV 15
mat dove grey coated aluminium, embossed finish



AV 70
mat bronze coated aluminium, embossed finish



AV 81
mat anthracite grey coated aluminium, embossed finish



AV 84
silver coated aluminium, polished finish

ZINC AND POLYESTER POWDER COATED STEEL INDOOR/OUTDOOR USE


ZL
zinc and mat linen,
coated, embossed
finish



ZT
zinc and mat dove
grey coated,
embossed finish



ZA
zinc and mat
anthracite coated,
embossed finish



ZY
zinc and mat
mustard coated,
embossed finish



ZE
zinc and mat
terracotta coated,
embossed finish



ZO
zinc and mat air-
force blue coated,
embossed finish



ZP
zinc and mat
antique pink
coated, embosse
finish



ZV
zinc and mat olive
green coated,
embossed finish



ZN
zinc and mat black
coated, embossed
finish

SUMMER AND LEO FINISHING – ZINC AND POLYESTER POWDER COATED STEEL INDOOR/OUTDOOR USE


VB
zinc and white mat
coated steel,
embossed finish



VT
zinc and dove grey
mat coated steel,
embossed finish



VA
zinc and anthracite
grey mat coated
steel, embossed
finish



VM
zinc and brick red
mat coated steel,
embossed finish



VV
zinc and willow
green mat coated
steel, embossed
finish



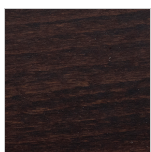
VZ
zinc and light blue
mat coated steel,
embossed finish

WOOD

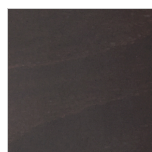

FN - 500
natural beech



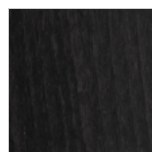
F1 - FS - 501
bleached beech



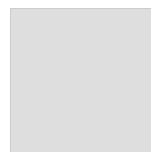
FW - 502
wenge stained
beech



FK
smoke beech



FB
black stained beech



FG - 504
grey stained beech



HS
bleached ash



RN
natural oak



NR
black stained oak



NC
Canaletto walnut

I materiali riprodotti sono puramente indicativi per le inevitabili differenze dovute alla riproduzione tipografica e/o la visualizzazione a monitor.
SCAB si riserva il diritto di modificare, senza preavviso, la propria produzione. Misure e colori sono puramente indicativi.

SUBSCRIBE TO NEWSLETTER

Follow us:     

[Privacy Policy](#) - [Cookie Policy](#) - [Reservati](#)